

# TSUNAMI EVACUATION MAP

## UMATAC/ MERIZO, GUAM



### IF YOU FEEL A STRONG EARTHQUAKE:

- Drop, Cover, and Hold On
- When the shaking stops, move to safe zone
- DO NOT wait for an official warning
- Stay away from coastal areas until officials issue an "all clear"

A local tsunami can arrive in 15 to 20 minutes!



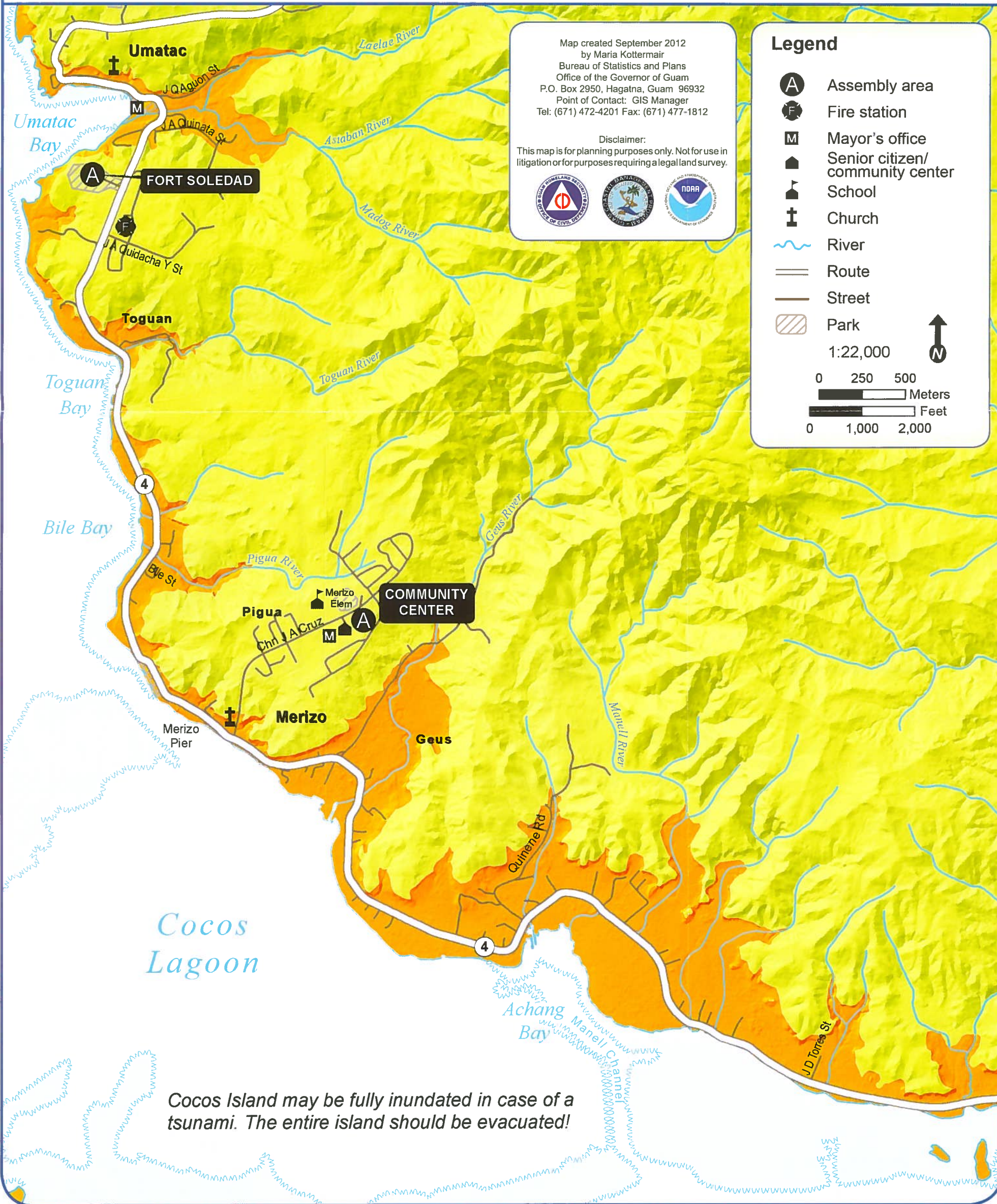
**A** Assembly Area or Safe Ground

Safe Zone

Proceed to this area for all tsunami warnings or if you feel a strong earthquake.

Evacuation Zone

Evacuate from this area for all tsunami warnings or if you feel a strong earthquake. Move inland and to higher ground or proceed to the 3rd floor or higher of a tall reinforced concrete building.



Map created September 2012  
by Maria Kottermair  
Bureau of Statistics and Plans  
Office of the Governor of Guam  
P.O. Box 2950, Hagatna, Guam 96932  
Point of Contact: GIS Manager  
Tel: (671) 472-4201 Fax: (671) 477-1812

Disclaimer:  
This map is for planning purposes only. Not for use in litigation or for purposes requiring a legal land survey.



### Legend

- A** Assembly area
- F** Fire station
- M** Mayor's office
- House icon Senior citizen/ community center
- School icon School
- Church icon Church
- Blue wavy line River
- Thick white line Route
- Thin black line Street
- Hatched box Park

