

# TSUNAMI EVACUATION MAP

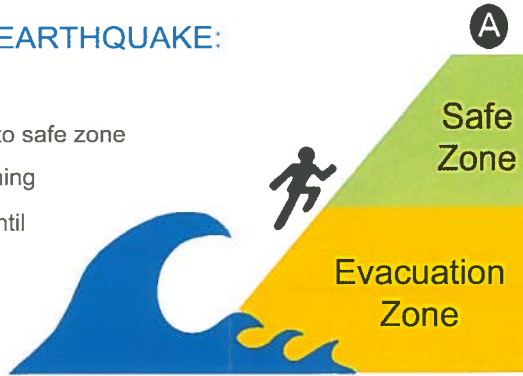
## INARAJAN, GUAM



### IF YOU FEEL A STRONG EARTHQUAKE:

- Drop, Cover, and Hold On
- When the shaking stops, move to safe zone
- DO NOT wait for an official warning
- Stay away from coastal areas until officials issue an "all clear"

A local tsunami can arrive in 15 to 20 minutes!



**A** Assembly Area or Safe Ground

Safe Zone

Proceed to this area for all tsunami warnings or if you feel a strong earth-

Evacuation Zone

Evacuate from this area for all tsunami warnings or if you feel a strong earthquake. Move inland and to higher ground or proceed to the 3rd floor or higher of a tall reinforced concrete building.

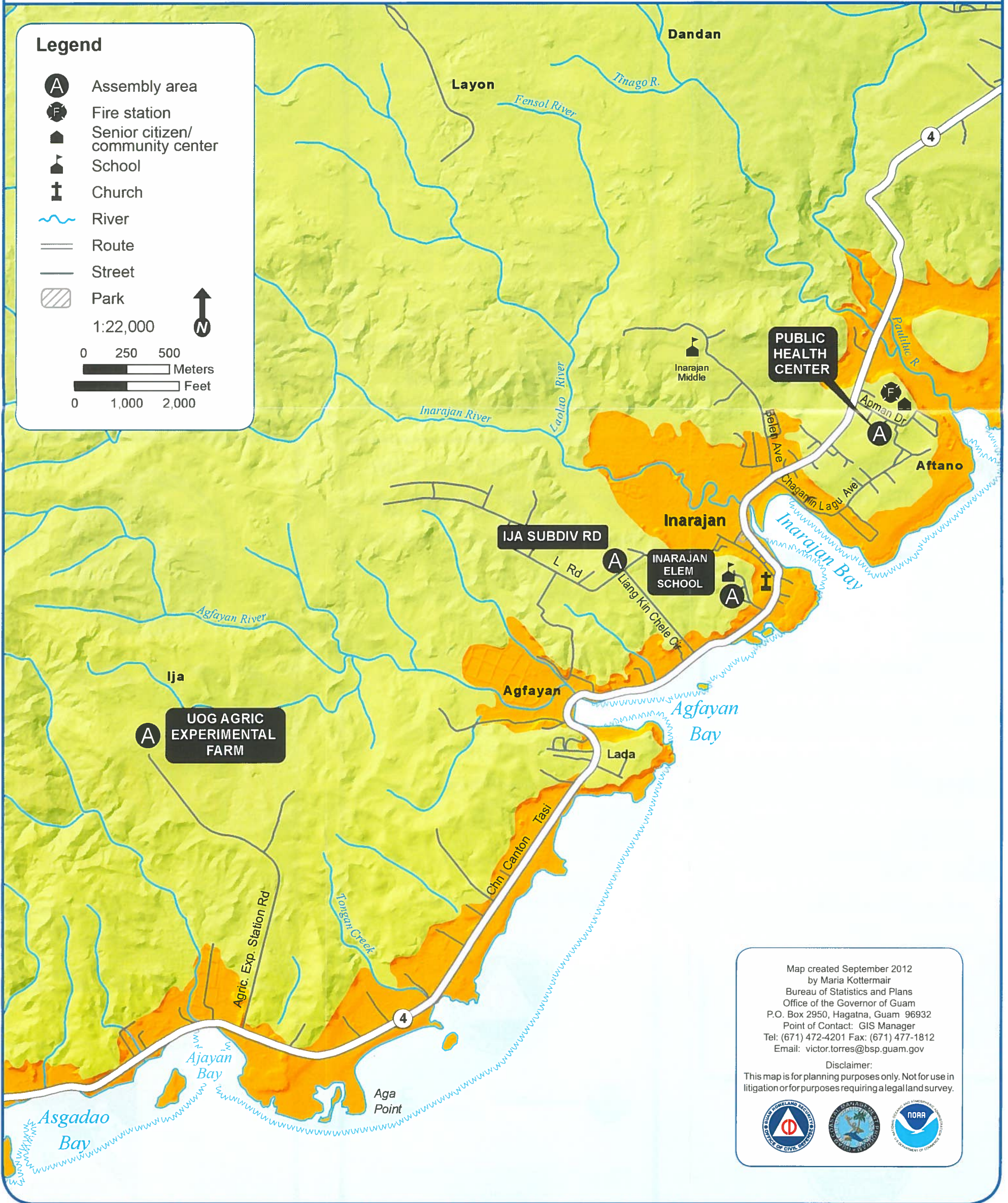
### Legend

- A** Assembly area
- F** Fire station
- Senior citizen/ community center
- School
- Church
- River
- Route
- Street
- Park

1:22,000

0 250 500 Meters

0 1,000 2,000 Feet



Map created September 2012  
 by Maria Kottermair  
 Bureau of Statistics and Plans  
 Office of the Governor of Guam  
 P.O. Box 2950, Hagatna, Guam 96932  
 Point of Contact: GIS Manager  
 Tel: (671) 472-4201 Fax: (671) 477-1812  
 Email: victor.torres@bsp.guam.gov

Disclaimer:  
 This map is for planning purposes only. Not for use in litigation or for purposes requiring a legal land survey.

