



## Regional Weather Outlook

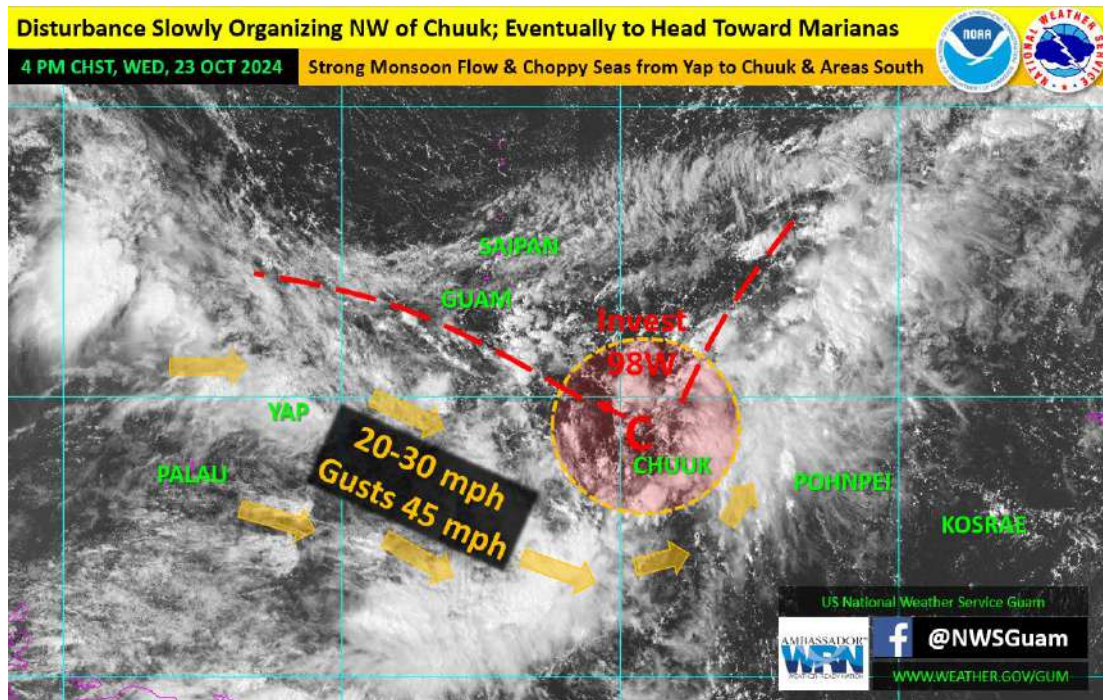
Wed, Oct 23, 2024, Valid at 5:00 PM ChST

Prepared by: Brandon Aydlett, Sci & Ops Ofcr

**REGIONAL OVERVIEW:** The past 12 hrs have favored Invest 98W for continued development. As such, the Joint Typhoon Warning Center has elevated its potential for development into a significant tropical cyclone to MEDIUM, meaning development is expected, but beyond 24 hrs. 98W has dropped SW to near Chuuk at 8N151E but is expected to eventually head toward the Marianas.

The immediate concern is the strong westerly monsoon pattern that persists across Western Micronesia where the worst conditions are found between Yap and Chuuk and areas south. Satellite data has shown squalls racing southeastward at 35-45 mph in the broad region between Yap and Chuuk, bringing brief heavy showers, damaging gusts, and rapidly spiking seas in the 10-15 ft range. Northwestern flow between Yap and Chuuk will turn westerly Thursday, possibly increasing as 98W shifts farther westward. The duration of this monsoonal flow and its impacts will be dependent on 98W and its motion.

The second concern revolves around Invest 98W: where it will go and how quickly it will organize. Though models still keep the Marianas well within the range of possibilities – it is still too early to tell exactly where it will pass through. Additionally, we could see a circulation, perhaps a tropical depression (less than 39 mph), passing by sometime Friday through Sunday. Based on all available guidance at this time, a tropical storm near Guam and/or the CNMI appears to be the worst-case scenario.



**TC POTENTIAL/HAZARDS:** Invest 98W now rated MED by JTWC: development into a significant TC expected, but beyond 24 hrs. 98W still anticipated to make a turn toward the Marianas Thu or Fri.

**REGIONAL WEATHER FORECASTS:**

[Mariana Islands](#)

[Palau/Yap/Chuuk Coastal](#)

[Area Forecast Discussion](#)

[Mariana Coastal Waters](#)

[Pohnpei/Kosrae/Majuro Coastal](#)

[Tropical Weather Discussion](#)

[Marianas Surf Zone](#)

**WARNINGS/WATCHES/ADVISORIES:**

[Marianas Special Weather Statement](#)

[West Micronesia Special Weather Statement](#)

[High Surf Advy Palau-Yap-Chuuk](#)

[Small Craft Advy Chuuk \(Yap & Palau cancelled @ 5PM\)](#)